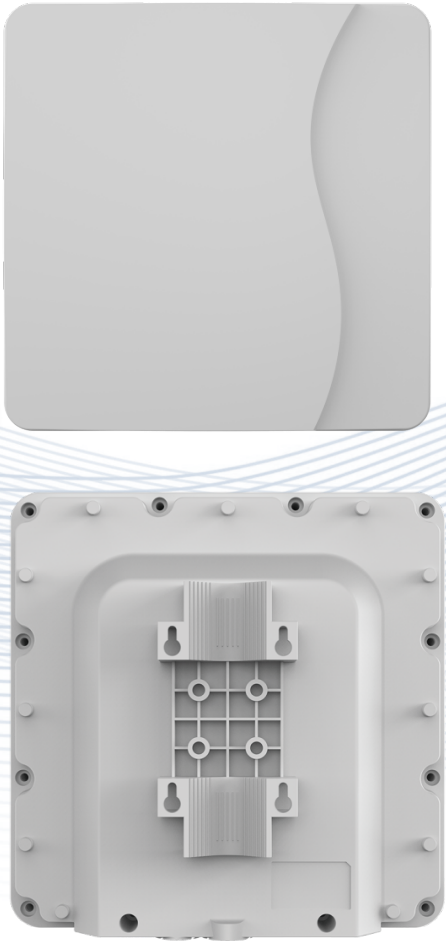


## CP880 CPE DATASHEET



# CP880

LTE Outdoor CPE

3GPP Release 12

CAT12

All LTE Bands

PoE

IP67

The CP880 from SUNWAVE is a premium outdoor LTE CPE. The product provides a high throughput data transmission network for residential, commercial and enterprise users. Customers enjoy an easy plug & play broadband access solution and large area coverage for various network service scenarios.

## CP880 CPE DATASHEET

RF SPECIFICATIONS		
<b>Supports Bands*</b>	Option 1	B1/3/7/8/(17)/20/(28)/38/(40)/41/42/43/48
	Option 2 (Prototype)	B2/4/5/8/12/14/17/25/26/38/41/42/43/48/66
	Option 3	B42/43/48
	Option 4	B7/38/41
<b>Carrier Aggregation (CA)</b>	Supports both Intra- and Inter- band ca DL 2 CA 4 x 4 MIMO DL 4 CA 2 x 2 MIMO UL 2 CA	
<b>MIMO</b>	DL 2 x 2 (4 CA 256 QAM) DL 4 x 4 (2 CA 64 QAM) UL 2 x 2 64 QAM	
<b>Tx / Rx</b>	2 Tx / 4 Rx	
<b>Transmission Mode</b>	TM 1/2/3/4/5/6/7/8/9	
<b>Output Power @ 25 °C   77 °F</b>	Max 23 ± 2dBm, configurable	
<b>Receiving Sensitivity</b>	FDD	-100dBm/ 10 MHz @ QPSK
	TDD	-97dBm/ 20 MHz @ QPSK
<b>LTE Antenna</b>	4 directional antennas	
<b>LTE Antenna Gain</b>	Option 1	700 MHz ~ 1 GHz: 6 dBi 1.7 GHz ~ 2.1 GHz: 7 dBi 2.3 GHz ~ 2.7 GHz: 9 dBi 3.4 GHz ~ 3.8 GHz: 8 dBi
	Option 2	700 MHz ~ 1 GHz: 6 dBi 1.7 GHz ~ 2.1 GHz: 7 dBi 2.3 GHz ~ 2.7 GHz: 9 dBi 3.4 GHz ~ 3.8 GHz: 8 dBi
	Option 3	3.4 GHz ~ 3.8 GHz: 16 dBi
	Option 4	2.5 GHz ~ 2.7 GHz: 13 dBi

\*The frequency bands in () are not included in the conventional sample.

HARDWARE SPECIFICATIONS	
<b>LTE Standard</b>	3GPP Release 12, CAT 12
<b>Flash</b>	2 GB
<b>DDR</b>	2 GB
<b>Power Supply</b>	24V Non-standard PoE default IEEE 802.3 at compatible PoE customized
<b>Ethernet LAN Port/POE Input</b>	(1) Gigabit RJ45 PoE LAN Port 10/100/1000M auto-sensing MDI/ MDIX

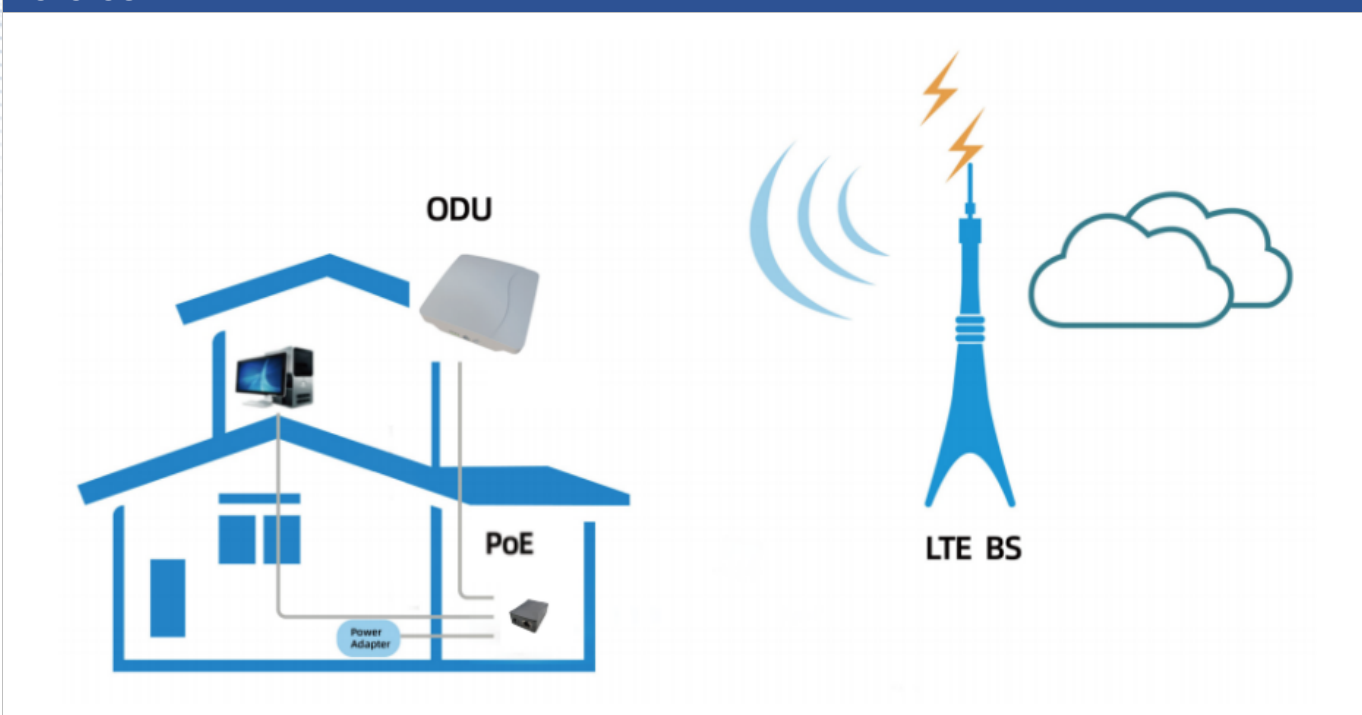
# CP880 CPE DATASHEET

<b>IP Rating</b>	IP67
<b>LED</b>	4 LED indicators (PWR, NET, SIM, RF signal)
<b>USIM</b>	Supports 1.8V/ 3.0V 2FF USIM
<b>RJ45</b>	(1) Gigabit RJ45
<b>Reset</b>	Reset and restore factory setup
<b>Antenna</b>	4 directional antennas
<b>Dimensions</b>	288 mm x 288 mm x 82 mm   11.3 in x 11.3 in x 3.2 in
<b>Weight</b>	ODU < 2 kg   4.41 lbs
<b>Power Consumption</b>	< 10W
<b>Power Adapter</b>	Input: AC 90 ~ 240V Output: DC 24V/ 0.5A

## ENVIRONMENT SPECIFICATIONS

<b>Temperature</b>	Operating	-30 °C ~ 60 °C   -22 °F ~ 140 °F
	Storage	-40 °C ~ 85 °C   -40 °F ~ 185 °F
<b>Humidity</b>	Operating	10 ~ 90%
	Storage	5 ~ 95%

## TOPOLOGY



## SOFTWARE SPECIFICATIONS

Language Default Setting: English (alternative language can be customized)

Supports NAT/ bridge/ router mode

## CP880 CPE DATASHEET

Supports the Http or Https web server	
Supports 2 Users (Admin user and normal user) with different limitation and display	
<b>Peak Throughput</b>	FDD DL 800 Mbps (4 CC 256 QAM) FDD UL 150 Mbps (4 CC 256 QAM) TDD DL 560 Mbps (configuration 2:7) TDD UL 30 Mbps (configuration 2:7)
<b>LAN</b>	1000 Mbps
	MDI/ MDIX Auto-sensing
	IEEE802.3/ 802.3u/ 802.3ab compatible
PIN management, SIM card authentication	
Encryption backup current settings and restore the backup settings	
Export current diagnosis results and operation logs	
<b>Statistics</b>	Link status (LAN)
	Transmit/ receive traffic in packets
	Up time
Supports multiple APN	
<b>VPN</b>	IPSec
	PPTP
	L2TP V2/V3
	GRE L2/L3
	VPN pass-through
IPv6/IPv4 dual stack	
<b>Status</b>	Signal strength
	Network type
	Network connection status
	SIM card status
	Operator name, system mode
Supports full band or preferred band and frequency	
Supports PCI lock (cell lock), band lock, PLMN lock	
Supports BIP	

## DEVICE MANAGEMENT

<b>Integrity Check</b>	Image one version
	Image one checksum
	Image two version
	Image two checksum
<b>Version Rollback</b>	Automatically rollback to previous version when upgrade fails
<b>Software Upgrade HTTP/FTP</b>	Full image upgrade

## CP880 CPE DATASHEET

<b>Auto Upgrade</b>	Firmware upgrade manually
	Enable/ disable upgrade firmware
	Upgrade URL
	Version file
	Check new firmware every (hr: 1 ~ 744)
	Start time
	Random time
<b>TR-069</b>	Upload/ download the ACS specified file
	Download CPE configuration file
	Configure & queries parameters
	Remote upgrade
	CPE version update
	Debugging operations
<b>Port Mirror</b>	Can be enabled or disabled
<b>Syslog</b>	Log can be sent to the PC via LAN
<b>Diagnostics</b>	Ping and trace route

**BRIDGE MODE**

<b>Data Traffic Forward</b>	Forward the data traffic between the LTE network and PCs
<b>Maximum 4 PCs Support</b>	Each PC connects to the LTE public network via one APN
<b>Managed Module</b>	Possible to allocate each APN for the module, manageable module via TR-069 remote update version
<b>Public IP Allocation</b>	Public IP dynamically allocated to PC from the DHCP server Public IP received by CPE from LTE network
<b>Multiple APN</b>	Supports up to 4 APNs, possible to set up static route for each APN

**ROUTER MODE**

<b>LAN</b>	Set 2 IP addresses on the LAN, for 2 different networks
<b>WAN</b>	WAN IP: dynamic or static
<b>Router Protocol</b>	Static route
<b>DNS</b>	Adjustable
<b>Multiple APN</b>	Supports up to 4 APNs, possible to set static route for each APN

**NAT MODE**

<b>NAT</b>	Supports NAT function
<b>Firewall</b>	Possible to enable or disable the firewall
<b>Multiple APN</b>	Supports up to 4 APNs, possible to set static route for each APN



## CP880 CPE DATASHEET

<b>DMZ</b>	Possible to be Set
<b>DHCP Server</b>	Supports DHCP
<b>DNS</b>	Supports both auto DNS or manual DNS configuration

**FIREWALL FEATURES**

<b>Firewall Configuration</b>	Allow Ping from WAN
	Allow HTTPs login from WAN
	HTTPs login port from WAN
	DMZ
	DDOS
	Redirect ICMP to the host
Supports IP filtering	
Supports MAC filtering	
Supports URL filtering	
Supports UPnP	
Supports Port forwarding	

**APPENDIX-DELIVERS**

<b>CP880 Outdoor CPE</b>	1 PCS
<b>PoE Adapter</b>	1 PCS
<b>Accessories for Pole Mounting</b>	1 PCS

Contact Us Today

[www.sunwave.com](http://www.sunwave.com)[en.sunwave.com](http://en.sunwave.com)